

# About Bluejay Aston

The Aston is a limited edition offering located at Bangalore's most preferred destination; Central Bangalore, comprising of 2 & 3 BHK apartments spread over four floors.

Located off chord road, it is indeed one of the finest addresses. Prestigious educational institutes, hospitals, places of worship and entertainment hubs adorn the vicinity.

With major infrastructure already in place, having Namma Metro in the vicinity is icing on the cake.

Bluejay Aston is developed by a highly reputed team of professionals with extensive experience in the development of high end residential projects.



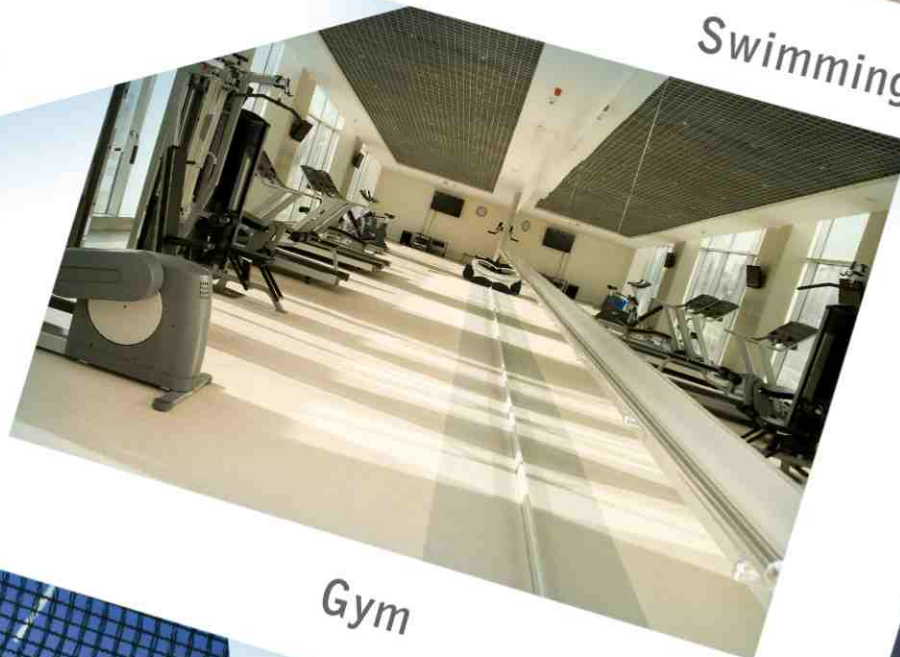
# Enjoy the luxuries at the Aston



Party Hall



Swimming pool



Gym



Game Room



Video Door Phone

# Why Aston...

- ✎ The spacious terrace pool comprises of a paddle pool for toddlers , providing you the perfect retreat for relaxation on a sunny day.
- ✎ Zero Dead Spaces.
- ✎ Vaastu compliance - All the units at the Aston are Vaastu compliant.
- ✎ Internally facing Utility Spaces - No more ugly sights of clothes being hung.
- ✎ Separate wet and dry areas in all washrooms.
- ✎ Advanced Home Automation - Intercom coupled with Video door phone provides interactive communication thus using technology to make life easier, safer and more luxurious.
- ✎ Behind Ambedkar Sports Complex : Provides international standard basketball court, badminton court, running track and even a skating rink.
- ✎ The party hall on the terrace, opens to the stunning landscape and the pool deck area presenting you the perfect location to indulge yourself.
- ✎ The spacious Gym offers the finest men and women locker rooms and separate change rooms with particular attention paid to ensure privacy.
- ✎ Aesthetically brick cladded exterior envelopes the front elevation, creating an insulation layer resulting in cooler temperature..





**BLUEJAY**  
Aston

# Project Specifications



## **STRUCTURE AND WALLS**

RCC framed structure designed for earthquake resistance compliant with I.S code with Concrete Block Masonry.

## **FLOORING**

Master Bedroom : Wooden Laminated Flooring.

Living/Dining/Bedrooms/Kitchen : Branded Vitrified Tiles.

Toilets/Utility/Balcony : Anti Skid Ceramic Tiles.

## **DOORS**

Main Door : Teak Wood frame with flush shutters.

Other Doors : Salwood frame with flush shutters.

Balcony doors : High Quality Aluminium Sliding Doors.

## **HARDWARE**

MS railing for balcony, staircase and corridor.

## **WINDOWS / VENTILATORS**

Powder Coated Aluminium windows.

Ventilators - Powder coated aluminium ventilators.

## **KITCHEN**

25 mm Granite platform. Dado 2' height Glazed tiles.

# Project Specifications

## **TOILETS**

JAQUAR or Equivalent CP fittings

Sanitary fittings of ROCA/TOTTO or KOHLER equivalent

Rain shower of JAQUAR or equivalent make in Master Bedroom toilet

Dado : Utility & Wash Basin Area : 2' height Glazed tiles

Dado : Toilets : 7' Glazed tile

## **LIFTS**

Energy efficient Schindler MRL elevators.

Lift cladding : Aesthetically cladded granite for lifts.

## **STAIRCASE**

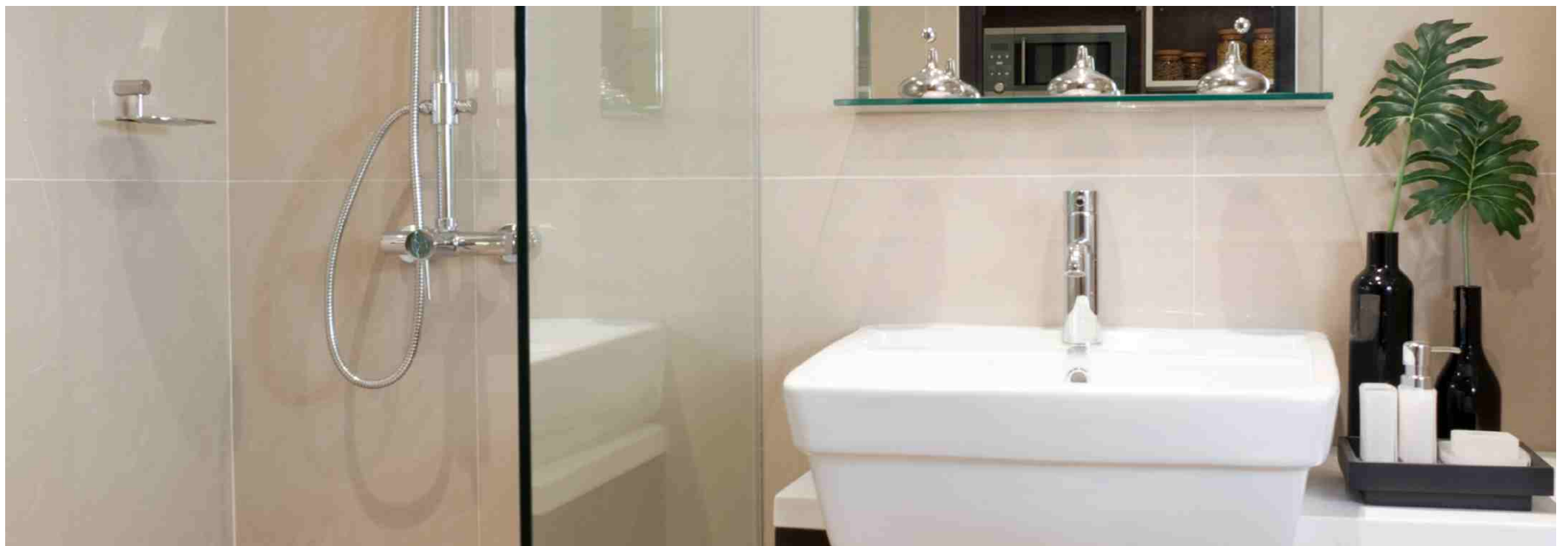
Treads, Riser and Skirting : Saderahalli or Kota stone.

## **ELECTRICAL**

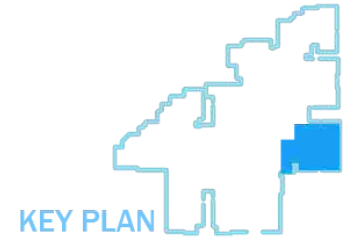
Anchor/Roma or Equivalent switches

## **GENERATOR BACKUP**

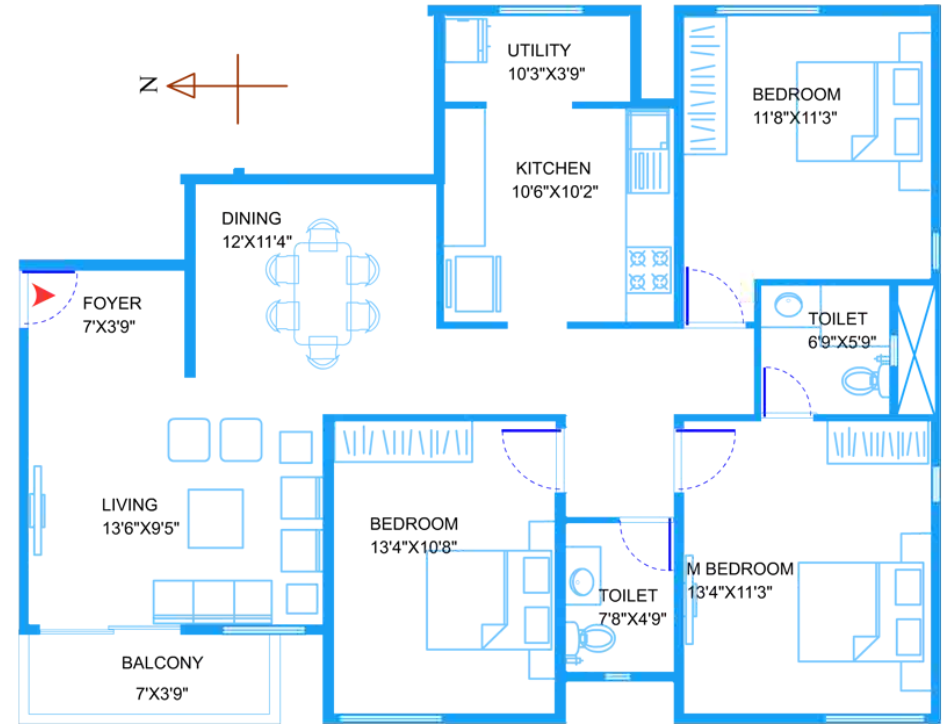
24/7 backup for common areas and 1 KV per apartment unit.



101,  
201,  
301,  
401

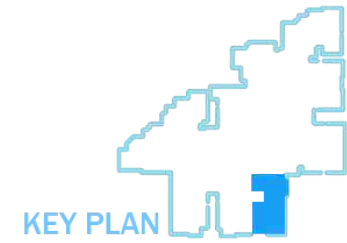


KEY PLAN

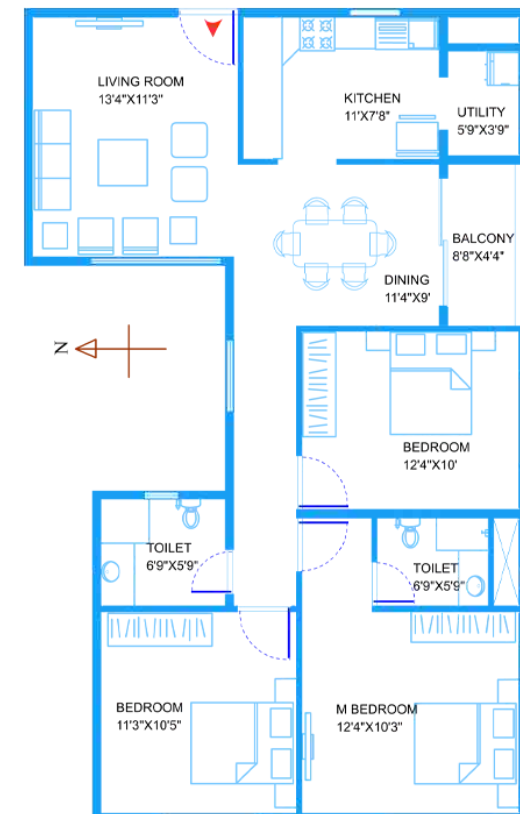


1583.57 SQFT

102,  
202,  
302,  
402



KEY PLAN



1332.82 SQFT

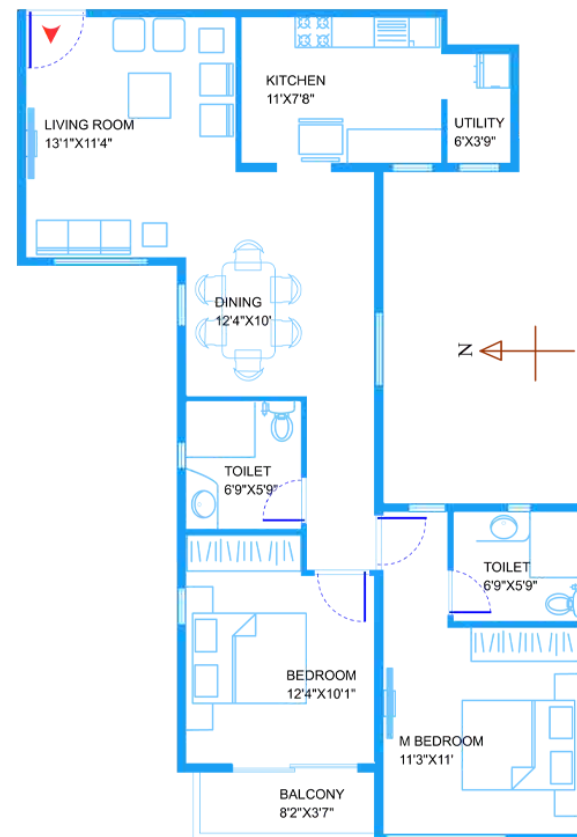
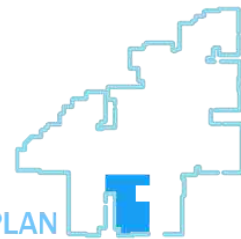




103,  
203,  
303,  
403

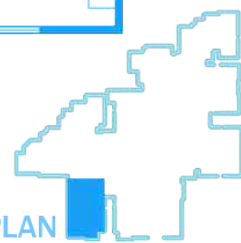


KEY PLAN



1131.61 SQFT

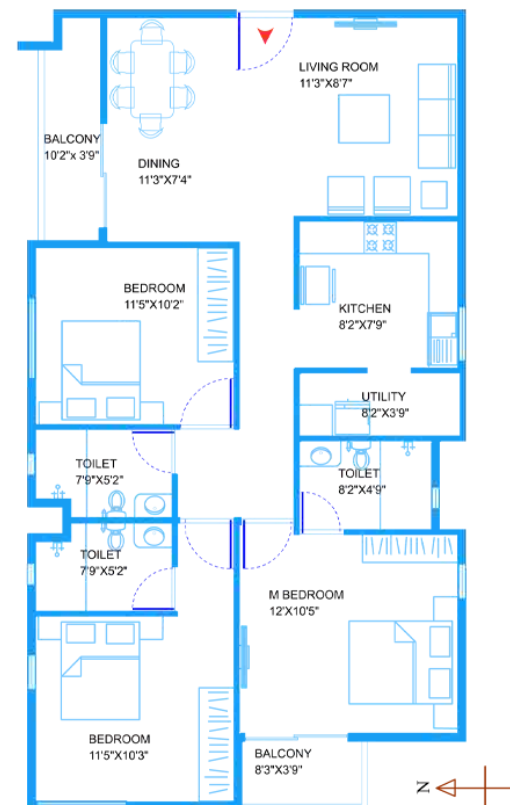
KEY PLAN



104,  
204,  
304,  
404



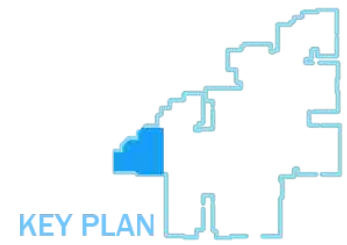
KEY PLAN



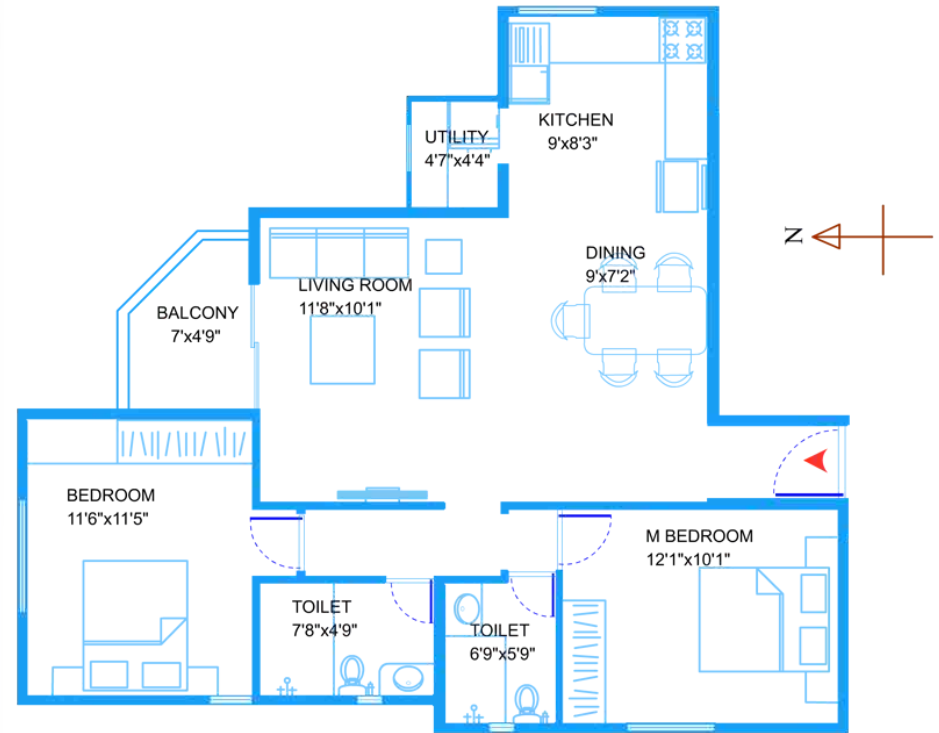
13816.27 SQFT



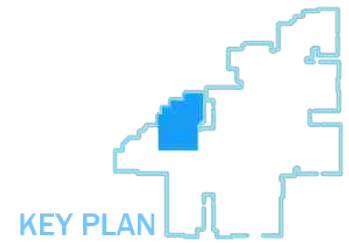
105,  
205,  
305,  
405



KEY PLAN

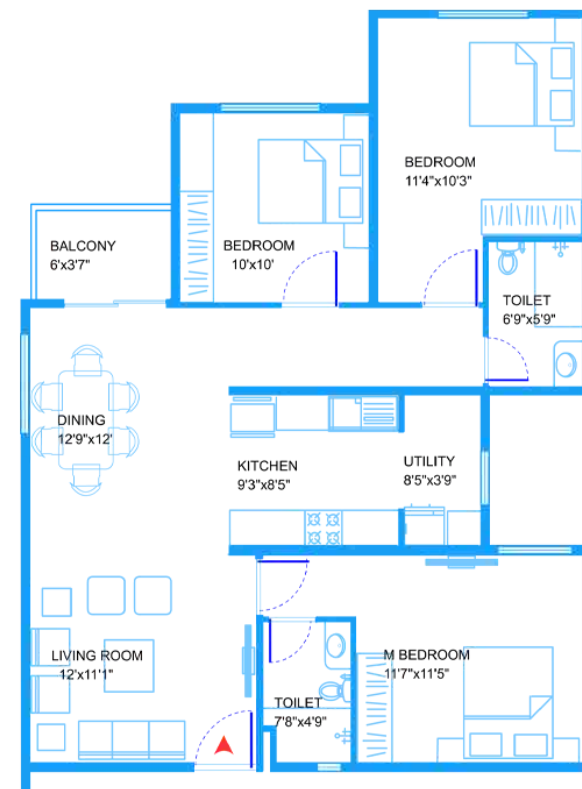


1078.50 SQFT



KEY PLAN

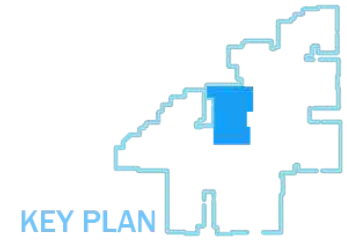
106,  
206,  
306,  
406



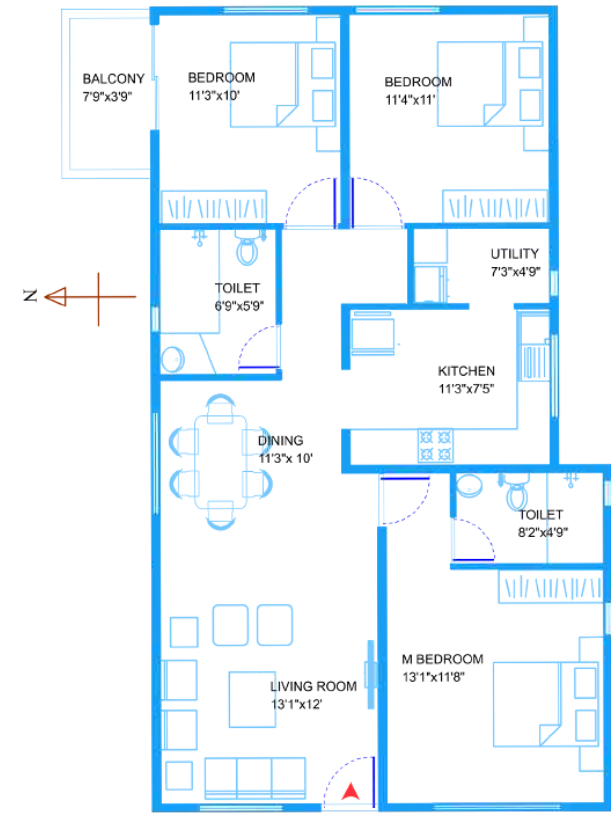
1313.60 SQFT



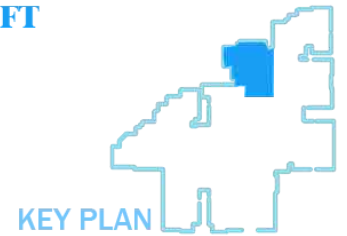
107,  
207,  
307,  
407



KEY PLAN

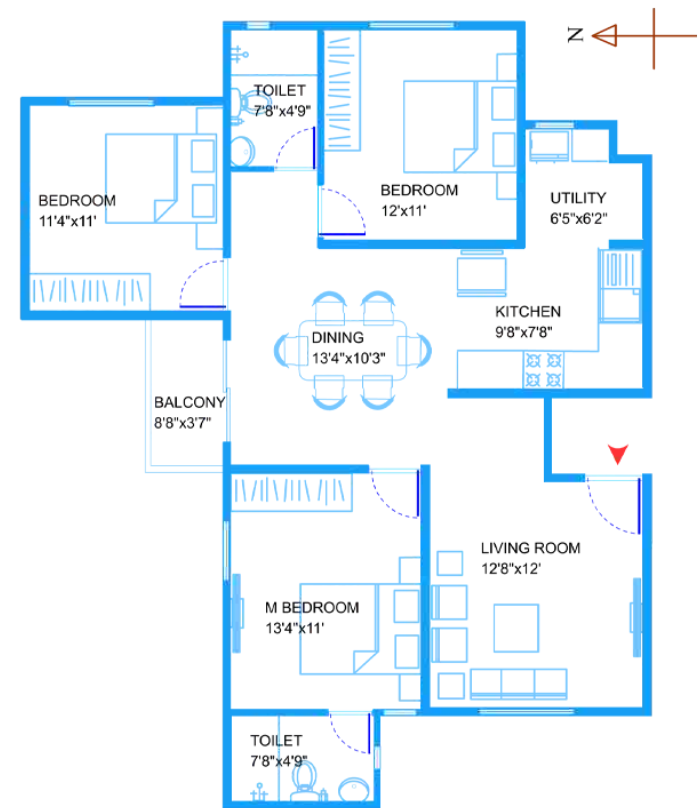


1376.05 SQFT



KEY PLAN

108,  
208,  
308



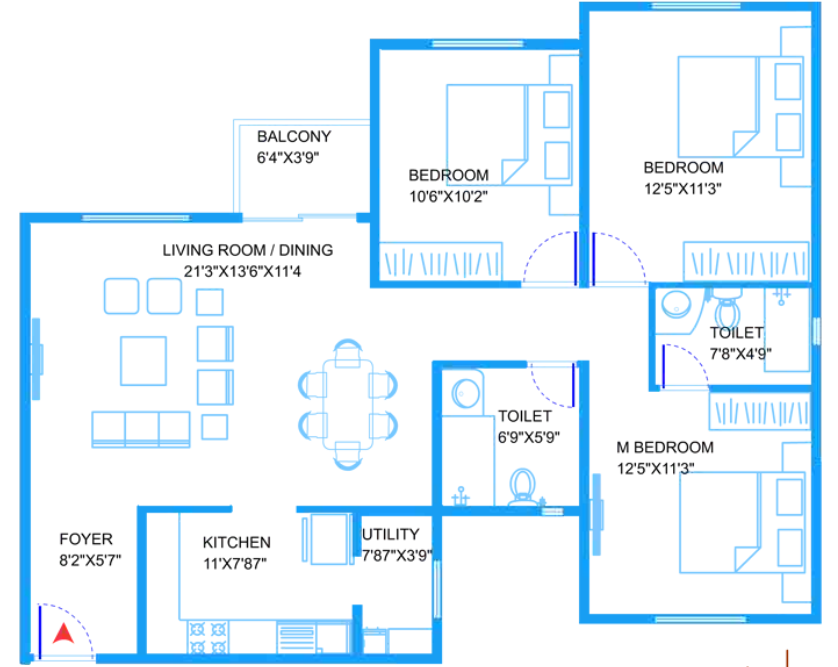
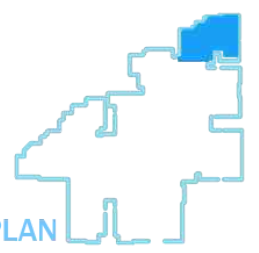
1422.58 SQFT



109,  
209,  
309

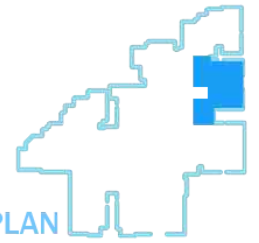


KEY PLAN

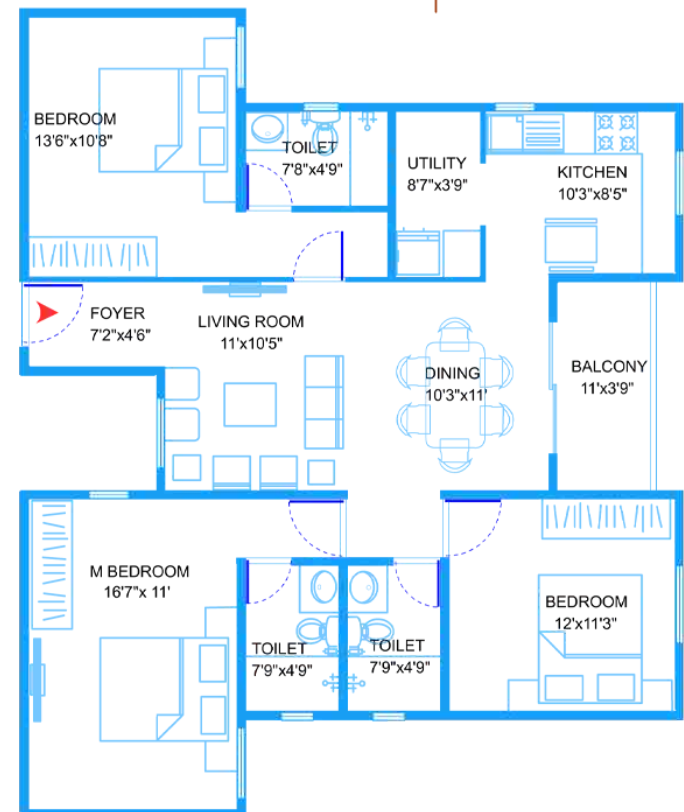


1407.89 SQFT

KEY PLAN




110,  
210,  
310,  
410




1538.00 SQFT







**Bluejay Oasis** off sarjapur road,  
66 exclusive apartments .



**Sunshine Hills** International Class township  
consisting of villas,rowhouses and apartments  
behind Parley off Tumkur road.



**Bluejay Emerald** BDA approved exquisite residential plots  
off Uttarahalli main road near rajarajeshwarinagar.



**Bluejay Palmfields** BDA Approved Villa community  
8kms from silkboard junction off Hosur road.

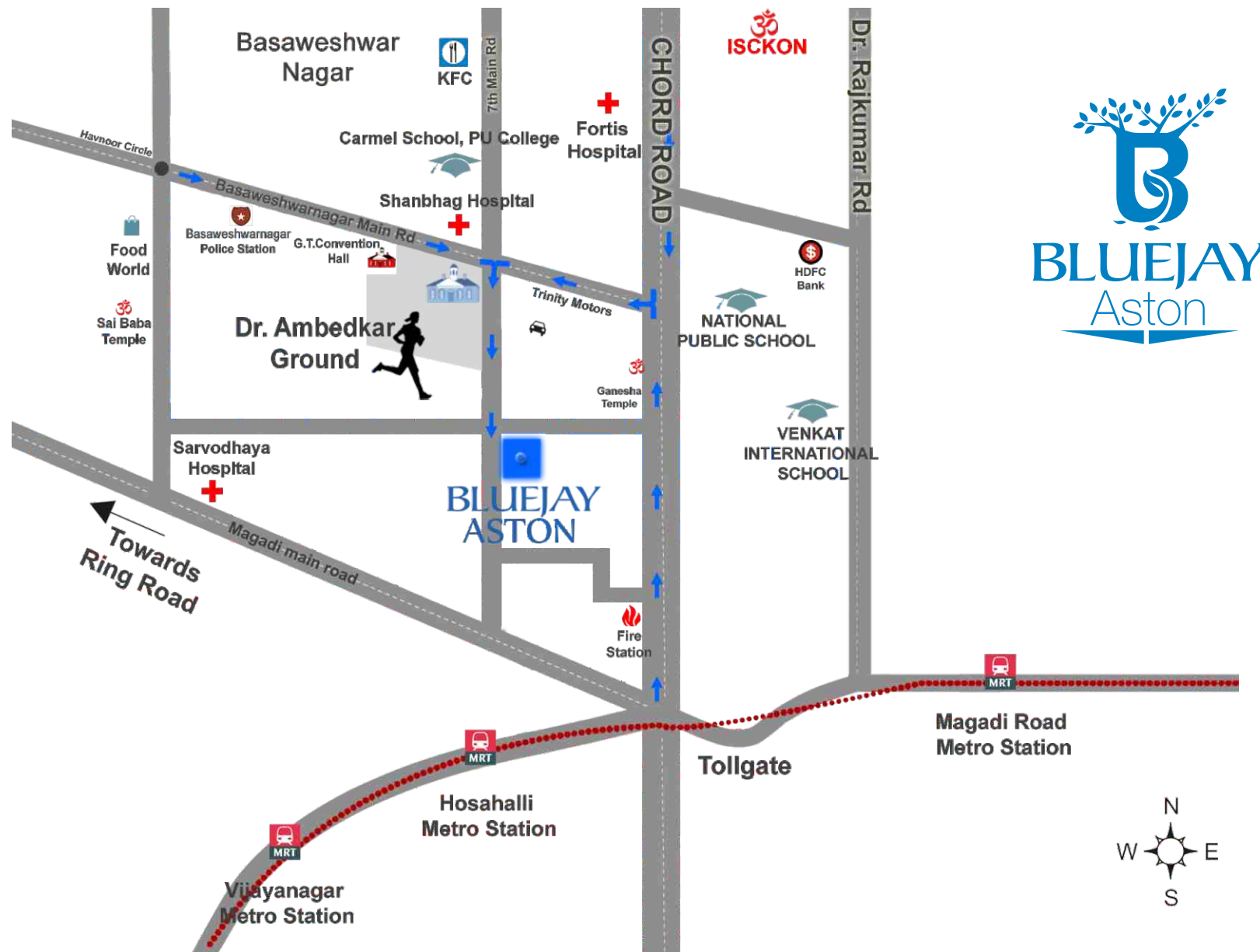
**Bluejay Pacific** BDA approved premium residential plots  
off Mysore road behind rajarajeshwari medical college.

Up coming projects . . .

**BLUEJAY**



# Location map



## The Team

Architect : Kembhavi Architecture Foundation

Structural Consultants : Sigma Consultants

Project Management Consultants (PMC) : Piedmont Development Company Pvt Ltd

## Contact



### Corporate Office

Bluejay Enterprises Pvt Ltd.  
#82, Thimmaiah Main Road,  
1st stage, 5th phase, Rajajinagar,  
Bangalore 560010.

Ph : 080 23387744

Fax : 080 23387755

E: info@bluejay.in

U: www.bluejay.in